



 **GOYEN**

# BULKHEAD CONNECTORS

# GOYEN BULKHEAD CONNECTORS



BHD



BHDD



BHSS

## DESCRIPTION

Goyen produces a range of aluminium diecast bulkhead connectors designed to ease the installation of cleaning systems onto dust collectors. These components eliminate the requirement for welding and allow easy removal of cleaning systems and blowtubes for maintenance purposes.

## SUITABLE FOR

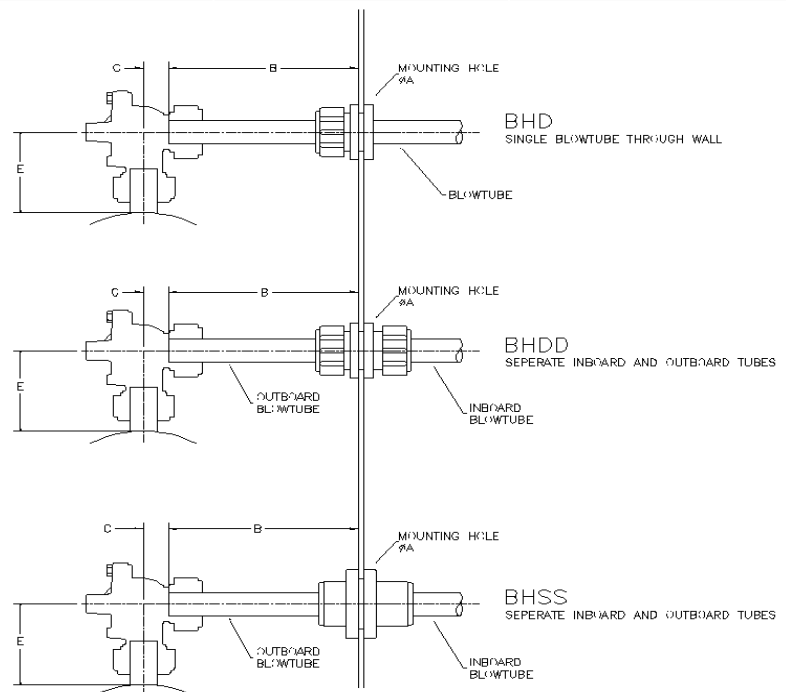
Most reverse pulse jet dust collector installations and their variations including bag filters, cartridge filters, envelope filters, ceramic filters, and sintered metal fibre filters.

1. Dresser nut and slide seal assemblies are for sealing purposes only and are not intended for valve or blowtube restraint.
2. Blowtubes and valves must be independently restrained.
3. Do not pressurise system until all valves are fully secured.
4. Fully relieve pressure before conducting any work on the cleaning system components.

## INSTALLATION

| MODEL  | ØA MM (INCHES)       | B MM (INCHES) |
|--------|----------------------|---------------|
| BH20D  | 45 – 51 (1.75 – 2.0) | 97 (3.81)     |
| BH25D  | 56 – 62 (2.2 – 2.4)  | 118 (4.63)    |
| BH40D  | 72 – 78 (2.8 – 3.1)  | 157 (6.19)    |
| BH20DD | 45 – 51 (1.75 – 2.0) | 97 (3.81)     |
| BH25DD | 56 – 62 (2.2 – 2.4)  | 118 (4.63)    |
| BH40DD | 72 – 78 (2.8 – 3.1)  | 157 (6.19)    |
| BH25SS | 56 – 62 (2.2 – 2.4)  | 118 (4.63)    |
| BH45SS | 72 – 78 (2.8 – 3.1)  | 157 (6.19)    |

| MATING VALVE | C MM (INCHES) | E MM (INCHES) |
|--------------|---------------|---------------|
| 20DD         | 22 (0.86)     | 105 (4.13)    |
| 25DD         | 30 (1.18)     | 121 (4.76)    |
| 45DD         | 40 (1.57)     | 155 (6.10)    |
| 20T          | 7 (0.28)      | NA            |
| 25T          | 5 (0.20)      | NA            |
| 45T          | 16 (0.63)     | NA            |
| 20FS         | 34 (1.34)     | 66 (2.60)     |
| 25FS         | 67 (2.63)     | 82 (3.23)     |
| 45FS         | 88 (3.46)     | 96 (3.78)     |

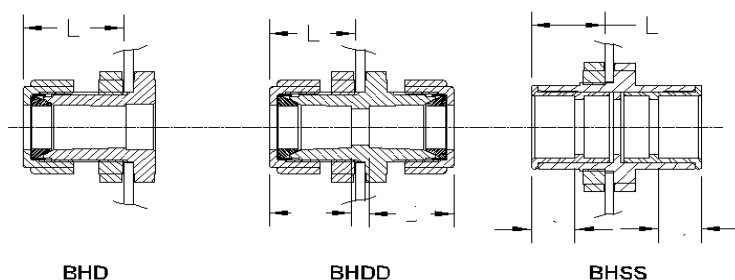


# GOYEN BULKHEAD CONNECTORS

## DIMENSIONS

[Dimensions in mm and [inches]]

| MODEL  | L – LENGTH<br>MM (INCHES) | D – INSERTION DEPTH<br>MM (INCHES) |
|--------|---------------------------|------------------------------------|
| BH20D  | 51 (2.01)                 | Not applicable                     |
| BH25D  | 55 (2.17)                 | Not applicable                     |
| BH40D  | 72 (2.83)                 | Not applicable                     |
| BH20DD | 52 (2.05)                 | 48 (1.89)                          |
| BH25DD | 55 (2.17)                 | 52 (2.05)                          |
| BH40DD | 72 (2.83)                 | 58 (2.28)                          |
| BH25SS | 52 (2.05)                 | 30 (1.18)                          |
| BH45SS | 51 (2.01)                 | 30 (1.18)                          |



## ORDER CODE AND CHARACTERISTICS

| ORDER CODE | NOM. PIPE SIZE<br>MM (INCHES) | STYLE              | MATERIAL                    | TEMPERATURE RANGE<br>°C °(F) | UNIT MASS<br>KG (LBS) |
|------------|-------------------------------|--------------------|-----------------------------|------------------------------|-----------------------|
| BH20D      | 20 (¾)                        | Single dresser nut | Diecast aluminium & nitrile | –40 (–40) to 80 (176)        | 0.27 (0.60)           |
| BH20D-V    | 20 (¾)                        | Single dresser nut | Diecast aluminium & viton   | –29 (–20.2) to 232 (449.6)   | 0.27 (0.60)           |
| BH25D      | 25 (1)                        | Single dresser nut | Diecast aluminium & nitrile | –40 (–40) to 80 (176)        | 0.40 (0.88)           |
| BH25D-V    | 25 (1)                        | Single dresser nut | Diecast aluminium & viton   | –29 (–20.2) to 232 (449.6)   | 0.40 (0.88)           |
| BH40D      | 40 (1.5)                      | Single dresser nut | Diecast aluminium & nitrile | –40 (–40) to 80 (176)        | 0.76 (1.68)           |
| BH40D-V    | 40 (1.5)                      | Single dresser nut | Diecast aluminium & viton   | –29 (–20.2) to 232 (449.6)   | 0.76 (1.68)           |
| BH20DD     | 20 (¾)                        | Two dresser nuts   | Diecast aluminium & nitrile | –40 (–40) to 80 (176)        | 0.41 (0.90)           |
| BH20DD-V   | 20 (¾)                        | Two dresser nuts   | Diecast aluminium & viton   | –29 (–20.2) to 232 (449.6)   | 0.41 (0.90)           |
| BH25DD     | 25 (1)                        | Two dresser nuts   | Diecast aluminium & nitrile | –40 (–40) to 80 (176)        | 0.66 (1.46)           |
| BH25DD-V   | 25 (1)                        | Two dresser nuts   | Diecast aluminium & viton   | –29 (–20.2) to 232 (449.6)   | 0.66 (1.46)           |
| BH40DD     | 40 (1.5)                      | Two dresser nuts   | Diecast aluminium & nitrile | –40 (–40) to 80 (176)        | 1.16 (2.56)           |
| BH40DD-V   | 40 (1.5)                      | Two dresser nuts   | Diecast aluminium & viton   | –29 (–20.2) to 232 (449.6)   | 1.16 (2.56)           |
| BH25SS     | 25 (1)                        | Slide seal         | Diecast aluminium & EPDM    | –40 (–40) to 80 (176)        | 0.53 (1.17)           |
| BH25SS-V   | 25 (1)                        | Slide seal         | Diecast aluminium & viton   | –29 (–20.2) to 232 (449.6)   | 0.53 (1.17)           |
| BHS25SS    | 25 (1)                        | Slide seal         | 316 stainless steel & viton | –29 (–20.2) to 232 (449.6)   | 1.5* (3.4)*           |
| BH45SS     | 40 (1.5)                      | Slide seal         | Diecast aluminium & EPDM    | –40 (–40) to 80 (176)        | 0.85 (1.87)           |
| BH45SS-V   | 40 (1.5)                      | Slide seal         | Diecast aluminium & viton   | –29 (–20.2) to 232 (449.6)   | 0.85 (1.87)           |
| BHS45SS    | 40 (1.5)                      | Slide seal         | 316 stainless steel & viton | –29 (–20.2) to 232 (449.6)   | 2.5* (5.4)*           |

\* Approximate mass only

# GOYEN BULKHEAD SEAL CUP



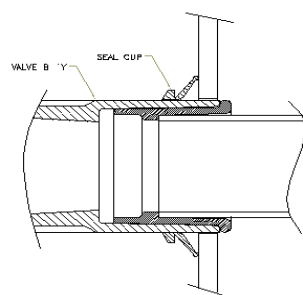
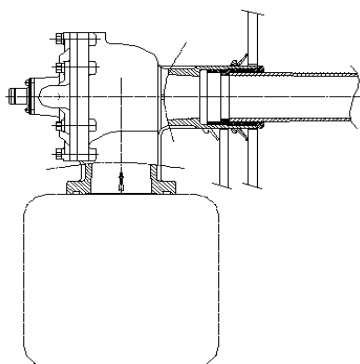
## DESCRIPTION

Goyen produces a range of EPDM and viton bulkhead seals designed to ease the installation of cleaning systems onto dust collectors. These components eliminate the requirement for welding and allow easy removal of cleaning systems and blowtubes for maintenance purposes.

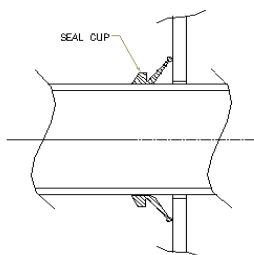
## SUITABLE FOR

Most reverse pulse jet dust collector installations and their variations including bag filters, cartridge filters, envelope filters, ceramic filters, and sintered metal fibre filters.

## INSTALLATION



Valve to wall seal  
Suitable for FS valves only



Blowtube to wall seal

## ORDER CODE AND CHARACTERISTICS

| ORDER CODE | STYLE                 | NOM. PIPE OD<br>SCHEDULE 40 | MATERIAL | TEMPERATURE RANGE<br>°C °[F] | UNIT MASS<br>KG (LBS) |
|------------|-----------------------|-----------------------------|----------|------------------------------|-----------------------|
| 690591     | Valve to wall seal*   | ¾"                          | EPDM     | -40 (-40) to 82 (179.6)      | 0.005                 |
| 690591-2   | Valve to wall seal*   | ¾"                          | Viton    | -29 (-20.2) to 232 (449.6)   | 0.005                 |
| 690125     | Valve to wall seal*   | 1"                          | EPDM     | -40 (-40) to 82 (179.6)      | 0.015                 |
| 690125-2   | Valve to wall seal*   | 1"                          | Viton    | -29 (-20.2) to 232 (449.6)   | 0.015                 |
| 690093     | Valve to wall seal*   | 1½"                         | EPDM     | -40 (-40) to 82 (179.6)      | 0.025                 |
| 690093-2   | Valve to wall seal*   | 1½"                         | Viton    | -29 (-20.2) to 232 (449.6)   | 0.025                 |
| 690593     | Blowtube to wall seal | ¾"                          | EPDM     | -40 (-40) to 82 (179.6)      | 0.005                 |
| 690593-2   | Blowtube to wall seal | ¾"                          | Viton    | -29 (-20.2) to 232 (449.6)   | 0.005                 |
| 690129     | Blowtube to wall seal | 1"                          | EPDM     | -40 (-40) to 82 (179.6)      | 0.015                 |
| 690129-2   | Blowtube to wall seal | 1"                          | Viton    | -29 (-20.2) to 232 (449.6)   | 0.015                 |
| 690094     | Blowtube to wall seal | 1½"                         | EPDM     | -40 (-40) to 82 (179.6)      | 0.025                 |
| 690094-2   | Blowtube to wall seal | 1½"                         | Viton    | -29 (-20.2) to 232 (449.6)   | 0.025                 |

\* Suitable for FS valves only